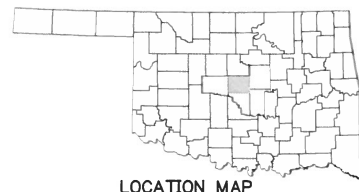


FOR SURVEY CONTROL DATA,
SEE SURVEY DATA SHEETS



STATE OF OKLAHOMA
DEPARTMENT OF TRANSPORTATION

OKLAHOMA DEPARTMENT OF TRANSPORTATION		
DESCRIPTION	REVISIONS	DATE
REVIS		
REVISED PROJECT NUMBER		10/12/17

PLAN OF PROPOSED
STATE HIGHWAY
FEDERAL AID PROJECT NUMBER STP-155C(569)SS△
GRADING, DRAINAGE, SURFACING, & BRIDGE PLANS
STATE HIGHWAY 74
BRIDGE "D" LOCATION 5563 0261X (NEW NBI NO. 32010)

SEE SHEET NO. 2 FOR INDEX OF SHEETS
AND LIST OF REQUIRED STANDARDS

OKLAHOMA COUNTY

STATE JOB NO. 14964(08)
CONTROL SECTION NO. 74-55-63

DESIGN DATA

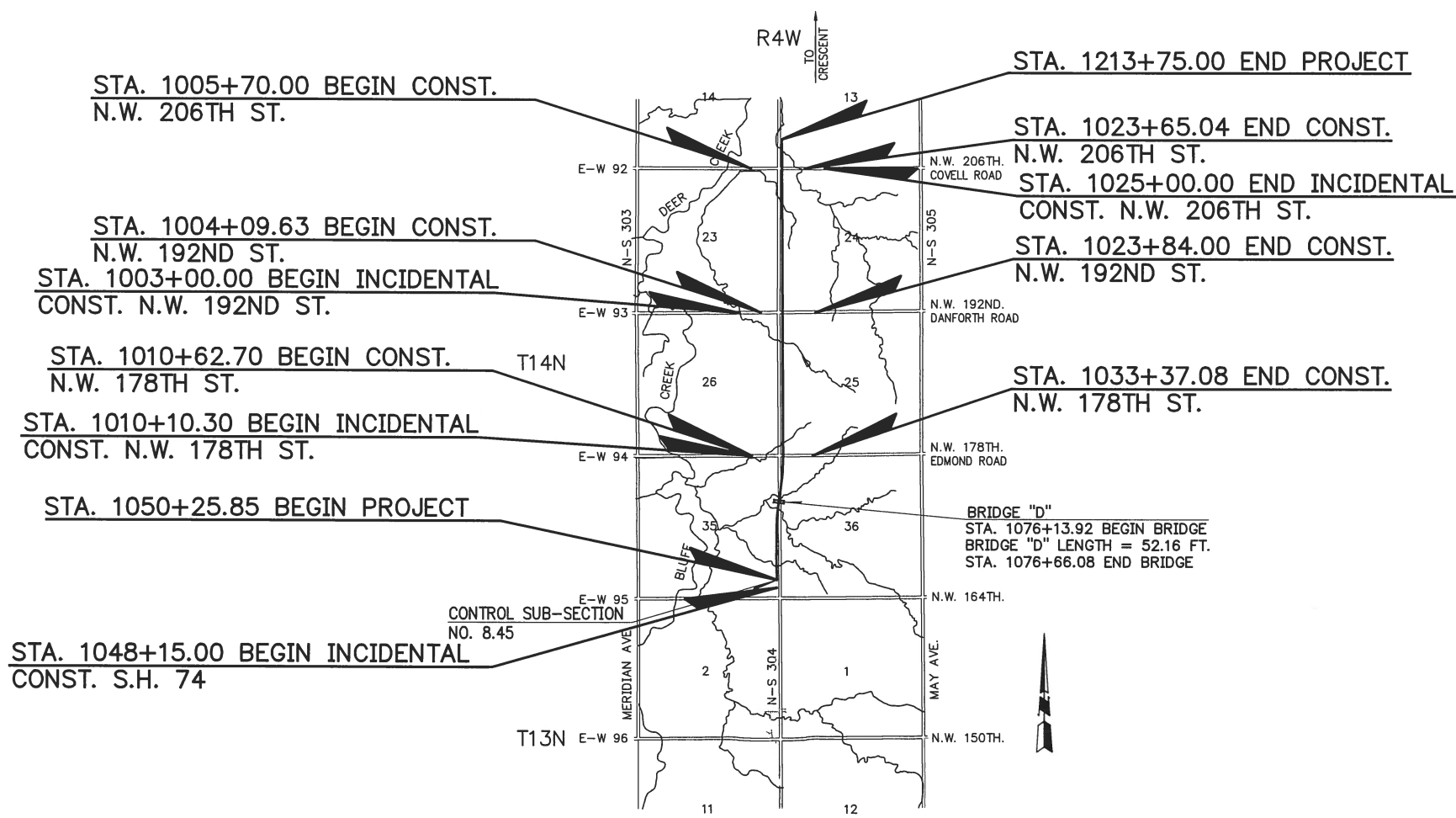
ADT 2017	=	20,190
ADT 2035	=	32,609
DHV (ONE WAY)	=	2348
D	=	60%
K(DHV/ADT)	=	12%
T (% DHV)	=	2%
T (% ADT)	=	6%
T3 (% ADT)	=	2%
V S.H. 74	=	70 MPH
20 YR FLEX ESALS	=	4.3 M.

SCALES

PLAN	1" = 50'
PROFILE HOR.	1" = 50'
VER.	1" = 5'
LAYOUT MAP	1" = 3,000'

CONVENTIONAL SYMBOLS

- PROPOSED ROAD
- RAILROADS
- RANGE & TOWNSHIP
- SECTION LINES
- QUARTER SECTION LINES
- FENCES
- GROUND LINE
- EXISTING ROADS
- BASE LINE
- GRADE LINES
- TELEPHONE & TELEGRAPH
- POWER LINES
- BUILDINGS
- DRAINAGE STRUCTURES - IN PLACE
- DRAINAGE STRUCTURES - NEW
- RIGHT-OF-WAY LINES - EXISTING
- RIGHT-OF-WAY LINES - NEW
- RIGHT-OF-WAY MARKERS - IN PLACE
- RIGHT-OF-WAY MARKERS - REMOVE & REPLACE
- RIGHT-OF-WAY MARKERS - NEW
- CONTROLLED ACCESS
- RIGHT-OF-WAY FENCE



STA. 1005+70.00 BEGIN CONST.
N.W. 206TH ST.

STA. 1004+09.63 BEGIN CONST.
N.W. 192ND ST.

STA. 1003+00.00 BEGIN INCIDENTAL
CONST. N.W. 192ND ST.

STA. 1010+62.70 BEGIN CONST.
N.W. 178TH ST.

STA. 1010+10.30 BEGIN INCIDENTAL
CONST. N.W. 178TH ST.

STA. 1050+25.85 BEGIN PROJECT

STA. 1048+15.00 BEGIN INCIDENTAL
CONST. S.H. 74

STA. 1213+75.00 END PROJECT

STA. 1023+65.04 END CONST.
N.W. 206TH ST.

STA. 1025+00.00 END INCIDENTAL
CONST. N.W. 206TH ST.

STA. 1023+84.00 END CONST.
N.W. 192ND ST.

STA. 1033+37.08 END CONST.
N.W. 178TH ST.

BRIDGE "D"
STA. 1076+13.92 BEGIN BRIDGE
BRIDGE "D" LENGTH = 52.16 FT.
STA. 1076+66.08 END BRIDGE

ROADWAY LENGTH

S.H. 74	16,296.99 FT.	3.086 MI.
178TH STREET	2,274.38 FT.	0.430 MI.
192ND STREET	1,974.37 FT.	0.373 MI.
206TH STREET	1,795.04 FT.	0.339 MI.
BRIDGE LENGTH	52.16 FT.	0.009 MI.
PROJECT LENGTH		4.237 MI.

EQUATIONS: NONE
EXCEPTIONS: NONE



3020 N.W. 149TH STREET
OKLAHOMA CITY, OK 73134
PH. (405) 752-1122
FAX (405) 752-8855
CA# 1759, RENEWAL 06-30-2019



Susan Lynn Davis 10-12-17
SUSAN LYNN DAVIS
REGISTERED PROFESSIONAL ENGINEER NO. 16026
DATE

OKLAHOMA DEPARTMENT OF TRANSPORTATION	DEPARTMENT OF TRANSPORTATION FEDERAL HIGHWAY ADMINISTRATION
DATE APPROVED _____	DATE APPROVED _____
BY _____ CHIEF ENGINEER	BY _____ DIVISION ADMINISTRATOR
SWO 3868	PROJECT NO. STP-155C(569)SS△ SHEET NO. 1

TRIAD DESIGN GROUP

2009 OKLAHOMA STANDARD SPECIFICATIONS FOR HIGHWAY CONSTRUCTION GOVERN,
APPROVED BY THE U.S. DEPARTMENT OF TRANSPORTATION, FEDERAL HIGHWAY ADMINISTRATION, JANUARY 4, 2010.